

Dimension Sheet for Spark Quenching Unit Type 070.000.6

(M.0700006.GB)

Application

Reduces spark production on the switching contacts occurring during DC-side switch-off of inductive loads.

- Voltage limitation according to VDE 0580 2000-07, Item 4.6
- Reduction of EMC-disturbance by voltage rise limitation, suppression of switching sparks
- Reduction of brake engagement times by a factor of 2 – 4 compared to freewheeling diodes

Function

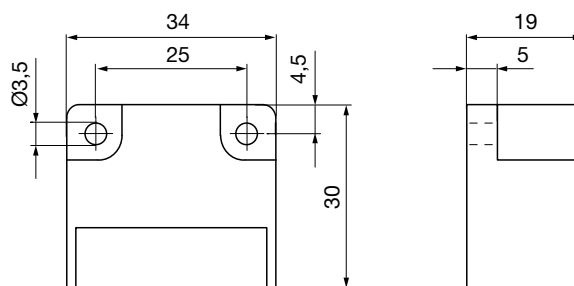
The spark quenching unit will absorb voltage peaks resulting from inductive load switching, which can cause damage to insulation and contacts. It limits these to 70 V and reduces the contact load. Switching products with a contact opening distance of > 3 mm are suitable for this purpose.



Electrical Connection (Terminals)

- 1 (+) Input voltage
- 2 (-) Input voltage
- 3 (-) Coil
- 4 (+) Coil
- 5 Free nc terminal
- 6 Free nc terminal

Dimensions (mm)



Technical Data

Input voltage	max. 300 VDC, max. 615 V _{peak} (rectified voltage 400 VAC, 50/60 Hz)
Switch-off energy	max. 9 J/2 ms
Power dissipation	max. 0,1 Watt
Rated voltage nc terminals	250 V
Protection	IP65, IP20 terminals
Ambient temperature	-25 °C up to +85 °C
Storage temperature	-25 °C up to +105 °C
Max. conductor connection diameter	2,5 mm ² , (AWG 26-12)
Max. terminal tightening torque	0,5 Nm

Accessories

Mounting bracket set for 35 mm rail acc. EN 60715:
Article No. 1803201

Order Number

___ / 0 7 0 . 0 0 0 . 6

▲
Size
1